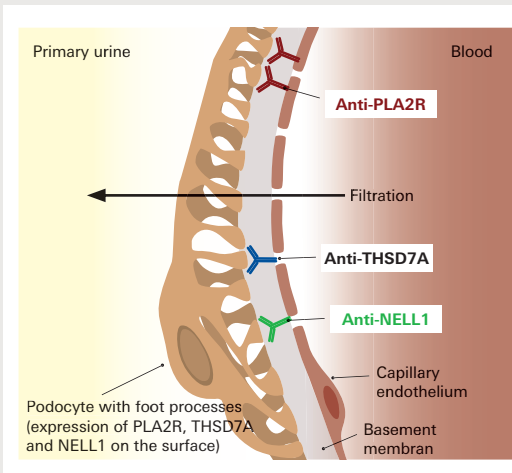




# Serological markers for primary membranous nephropathy

## Autoantibodies in primary membranous nephropathy (pMN)



### Anti-phospholipase A2 receptor antibody (anti-PLA2R)

- Most important serological marker for pMN
- Specificity of up to 99%, prevalence of up to 80%
- Serological determination of anti-PLA2R enables not only differential diagnosis but also prognosis as well as monitoring of the disease course and therapy.

### Anti-thrombospondin type-1 domain containing 7A antibody (anti-THSD7A)

- Supplementary serological marker to anti-PLA2R
- Up to 10% of anti-PLA2R-seronegative patients with pMN are anti-THSD7A-positive

### Anti-neural epidermal growth factor-like 1 protein antibody (anti-NELL1)

- Recently discovered antibody in anti-PLA2R and anti-THSD7A-negative pMN

## Worldwide exclusive test systems for the detection of anti-PLA2R and anti-THSD7A

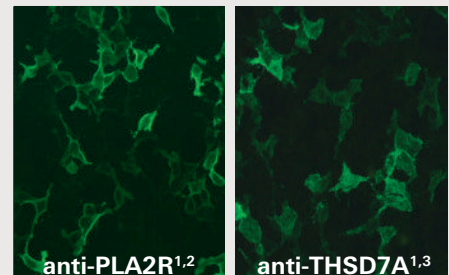
### Anti-PLA2R ChLIA (IgG) for IDS-i10 and IDS-iSYS



### Anti-PLA2R ELISA (IgG)



### Anti-PLA2R IIFT Anti-THSD7A IIFT



<sup>1</sup> Transfected cells <sup>2</sup> Computer-aided evaluation with EUROPattern <sup>3</sup> Available as IVD in combination with anti-PLA2R

Soon  
available!

IIFT for detection of autoantibodies against NELL1  
(for research use only, not for in vitro diagnostic use)

For further information please visit [www.pla2r.com](http://www.pla2r.com)