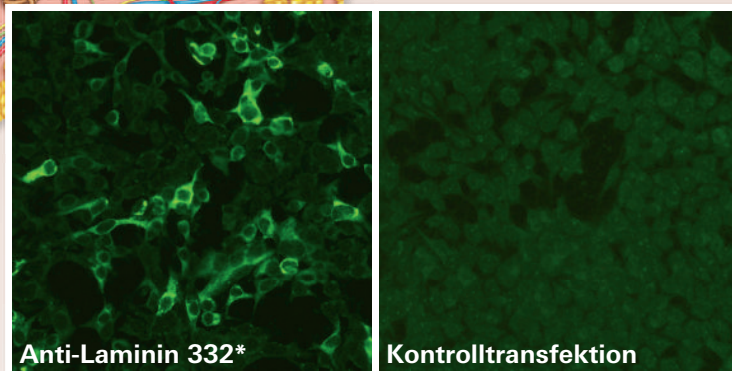
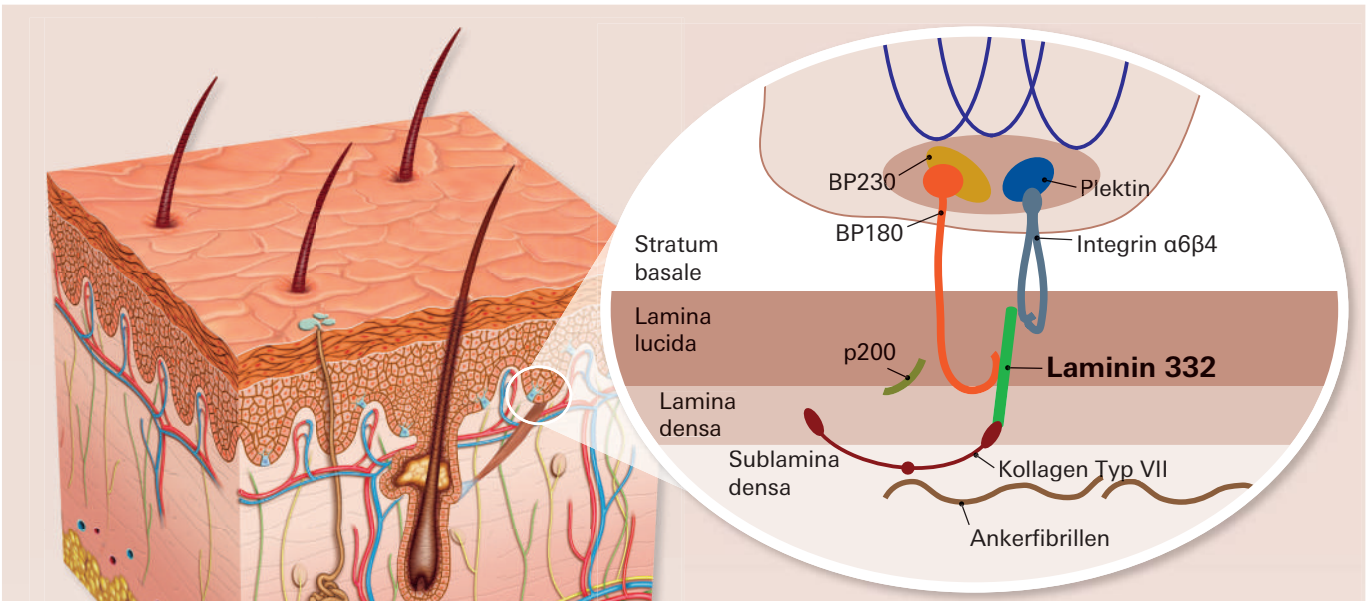




Diagnostik des Schleimhautpemphigoids

Nachweis von Antikörpern gegen Laminin 332



* transfizierte Zellen



Anti-Laminin 332 (LAM332)-IIFT

FA150b-1005-50

**Exklusiv bei
EUROIMMUN!**

Referenzen:

1. Goletz S *et al.* A sensitive and specific assay for the serological diagnosis of antilaminin 332 mucous membrane pemphigoid. *Br J Dermatol.* 180(1):149-156 (2019)
2. Schmidt E *et al.* European Guidelines (S3) on diagnosis and management of mucous membrane pemphigoid, initiated by the European Academy of Dermatology and Venereology – Part II. *J Eur Acad Dermatol Venereol* 35(10):1926-1948 (2021).