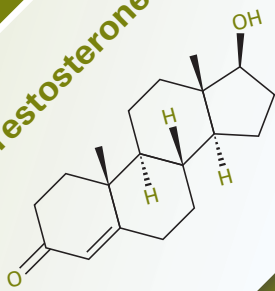


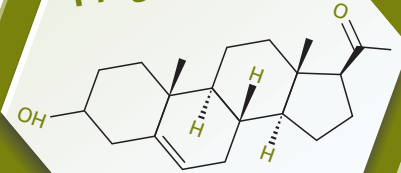


Hormones out of balance?

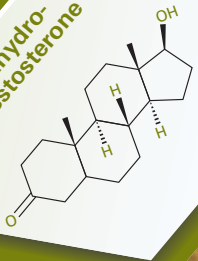
Testosterone



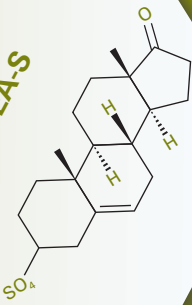
Pregnenolone



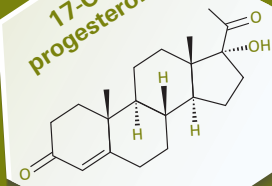
Dihydro-
testosterone



DHEA-S



17-OH
progesterone



EUROIMMUN's extensive portfolio of hormone ELISAs

**Reliable identification and differentiation
of sex hormone disorders**



ELISAs for the quantification of sex hormones

Parameter	Indication for the determination	Sample material	Order no.
17-OH progesterone (17-OHP)	Clarification of CAH (most common cause: 21-hydroxylase deficiency leading to accumulation of 17-OHP, excessive production of androgens and virilisation or hyperandrogenism)	Serum	EQ 6163-9601
3alpha-androstanediol-glucuronide (3alpha-ADG)	Women: Association of high levels with hirsutism and PCOS Men: Useful additional parameter besides testosterone in androgen deficiency A better indicator of peripheral androgen production than DHT	Serum	EQ 6156-9601
Androstenedione	Women: Support of the diagnosis of hyperandrogenism with PCOS (more sensitive than measurement of total testosterone) Association of increased concentrations with non-classic CAH with 21-hydroxylase-deficiency (in conjunction with excessive formation of 17-OHP)	Serum	EQ 6153-9601
Anti-Mullerian hormone (AMH)	Women: Correlation of the levels with ovarian function , low values as an indicator of increased need for gonadotropins for follicle stimulation in in vitro fertilisation, increased values as an indicator of PCOS	Serum, plasma	EQ 6161-9601
Dehydroepiandrosterone (DHEA)	Women: e.g. clarification of signs of virilisation, hirsutism and PCOS	Serum	EQ 6154-9601-1
Dehydroepiandrosterone sulfate (DHEA-S)	Exclusion of an androgen-secreting adrenal tumour	Serum	EQ 6155-9601
Dihydrotestosterone (DHT)	Men: Association of decreased values (as well as increased testosterone level) with 5α-reductase deficiency and increased values (as well as decreased testosterone level) with metabolic syndrome and/or type 2 diabetes Women: Association of increased values with hirsutism	Serum	EQ 6152-9601-1
Estriol, free (uE3)	Women: Indicator of foetal health and prenatal screening marker of the triple and quadruple test	Serum	EQ 6167-9601
Estrogens, total	Women: Estimation of the risk of recurrent breast carcinoma (correlates with a high level of total estrogens)	Serum	EQ 6160-9601-1
Estrone (E1)	Women: Clarification of menstrual disorders with severe obesity and bleeding during postmenopause, determination of postmenopausal estrogen status as well as therapy monitoring under estrone therapy	Serum	EQ 6165-9601-1
Pregnenolone	Association of increased concentrations with certain forms of CAH as well as of decreased concentrations with neurodegenerative diseases	Serum	EQ 6164-9601
Sex-hormone binding globulin (SHbG)	Women: Clarification of hyperandrogenism (e.g. in suspected PCOS) Men: Clarification of androgen deficiency Calculation of the amount of free estradiol and testosterone	Serum	EQ 6179-9601
Testosterone, free	Men: Suspected hypogonadism for detection of a decreased total testosterone value in serum (taking into account the concentration of free testosterone with a total testosterone level near the lower reference range or suspected changes in the SHbG level)	Serum	EQ 6151-9601
Testosterone, total	Women: Clarification of signs of virilisation	Serum	EQ 6151-9601-1

CAH: congenital adrenal hyperplasia
PCOS: polycystic ovary syndrome